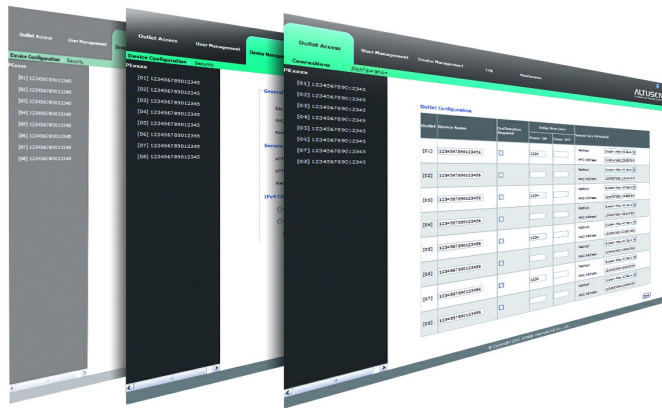


## eco DC

Energy & DCIM Management Web GUI



**The software has stopped providing RCI and RTI metrics due to ATEN's termination of the related licenses in 2020.**

ATEN eco DC perfectly synergizes with ATEN Power Distribution Units ([PDU](#)s) to provide an efficient way to optimize users energy needs. Administrator's [data center](#) is equipped with real-time monitoring, measurements and EnPIs analysis that produce reports of power usage and [PUE](#) to meet the ISO 50001 requirements. With these critical indexes, users will receive customized reports about the energy usage of the [data center](#) as well as energy saving suggestions, which allow users to enhance energy usage and save energy without harming the IT equipment's reliability.

eco DC is the new Web-based GUI that allows users log in to manage and control [PDU](#)s through web browser. No additional install or setup needed. eco DC can run under any platform and OS. Users can easily manage the power consumption of the [data center](#) through intuitive interface and graphics.

eco DC is available in a Server and Client version. The Server version offers the full functionalities and is capable of managing the [PDU](#)s through SNMP and managing client nodes through TCP / IP. This allows multiple users to log in to the server node and manage [PDU](#)s in different authorized zones, making distributed [PDU](#) management much more efficient under one centralized environment. With the Client version, users can log in to a server node to monitor [PDU](#) status and control each outlet on the [PDU](#)s. Having the eco DC Server and Client version allows [data centers](#) to optimize their performance and centralize management with ease.

## Features

- Automatic discovery of all PE and PG devices within the same intranet
- Remote real-time power measurement and monitoring
  - [PDU](#) level current / voltage / power dissipation / power consumption
  - Outlet ON / OFF / Recycle status
- Second window to monitor a [data center](#)'s [PUE](#), Power, Carbon Footprint and rack status
- Remote real-time power outlet management <sup>1</sup>
  - Power outlet On / Off / Cycle switching by outlet or user-defined group
  - Power outlet On / Off / Cycle switching with pre-defined schedule
  - User-defined outlet level delays for sequential power up
  - Current / Voltage / Power Dissipation / Power Consumption threshold level settings
  - User access assignment for every outlet
  - Name assignment to individual outlets
- Remote real-time environmental sensor <sup>2</sup> monitoring
  - Temperature / Temperature + Humidity / Temperature + Differential Pressure readings
  - Temperature and Humidity threshold level settings
- Plotting / Monitoring of all PE and PG devices
  - Add [data center](#) server racks
  - Add PE and PG devices for each server rack
  - Manage device / device outlet status for each plot
- Offers essential [data center](#) indices including Rack Intake Temperature, Rack Exhaust Temperature, Rack Equipment Temperature Difference
- Power analysis report for optimizing [data center](#) energy management – including power usage, power load, power cost, CO2 cost, power capacity and trends
- Exceed threshold alert through SMTP and System log
- 1024 line event log
- System log provision
- Two-level password security
- Strong security features include password protection and advanced encryption technologies – 128 bit SSL
- Supports [online UPS](#) and SNMP Card
- Real-time status charts for Current / Voltage / Wattage remote monitoring

\* Note:

1. Not all functions are supported by all PE and PG eco [PDU](#) models. Please contact your regional representative for more details.

2. EA series environmental sensors (except [EA1640](#) Temperature & Humidity Sensor) can only work with PG [PDU](#)s when being linked to the [EA1640](#) connected to PG [PDU](#)s.

## Specifications

Max PDU number	3000
Data Center Layout	45 x 30
Max RACK Number	3000
Max Zone Number	128
Power Report Data	3 years
Real Time Dashboard Data	N/A

Diagram



**ATEN International Co., Ltd.**

3F., No.125, Sec. 2, Datong Rd., Sijhih District., New Taipei City 221, Taiwan  
 Phone: 886-2-8692-6789 Fax: 886-2-8692-6767  
 www.aten.com E-mail: marketing@aten.com



© Copyright 2015 ATEN® International Co., Ltd.  
 ATEN and the ATEN logo are trademarks of ATEN International Co., Ltd.  
 All rights reserved. All other trademarks are the property of their  
 respective owners.